

Whiston Hospital Emergency Department Monthly Bulletin: January to December 2010

This bulletin provides a breakdown of all injury attendances at Whiston Hospital Emergency Department (ED) between January and December 2010. Injury attendance peaked in May (n=4,840), with February (n=3,602) having the least number of injury attendances (**Figure 1**).

For all months there were slightly more male (53%) injury attendances than female presenting at Whiston Hospital ED (**Figure 1**). Over a third (35%) of injury attendances were made by people aged 30 - 59 years and 25% by people aged 60 and over (**Figure 2**). The majority (96%) of injury attendances to Whiston ED stated their ethnicity as white (**Table 1**).

Table 2 illustrates the mode of arrival for patients presenting with injuries. The primary mode of arrival for injury attendances was private transport (62%).

Table 3 presents injury attendances by source of referral. Two-thirds (66%) of injury attendances self-referred.

Table 4 details the injury group of injury attendances. The majority (72%) of injury attendances were recorded as other injury. Of those attendances where an injury group was specified 46% were falls and 30% were road traffic collisions (RTCs). Assault attendees presenting at the Whiston ED between January and December 2010 were mainly male (62%) and 36% were aged between 30 and 59 years.

Table 5 shows the method of disposal of injury attendances; over four in ten (45%) attendees were discharged requiring no follow-up treatment.

Figure 1: Gender of injury attendances by month, January to December 2010

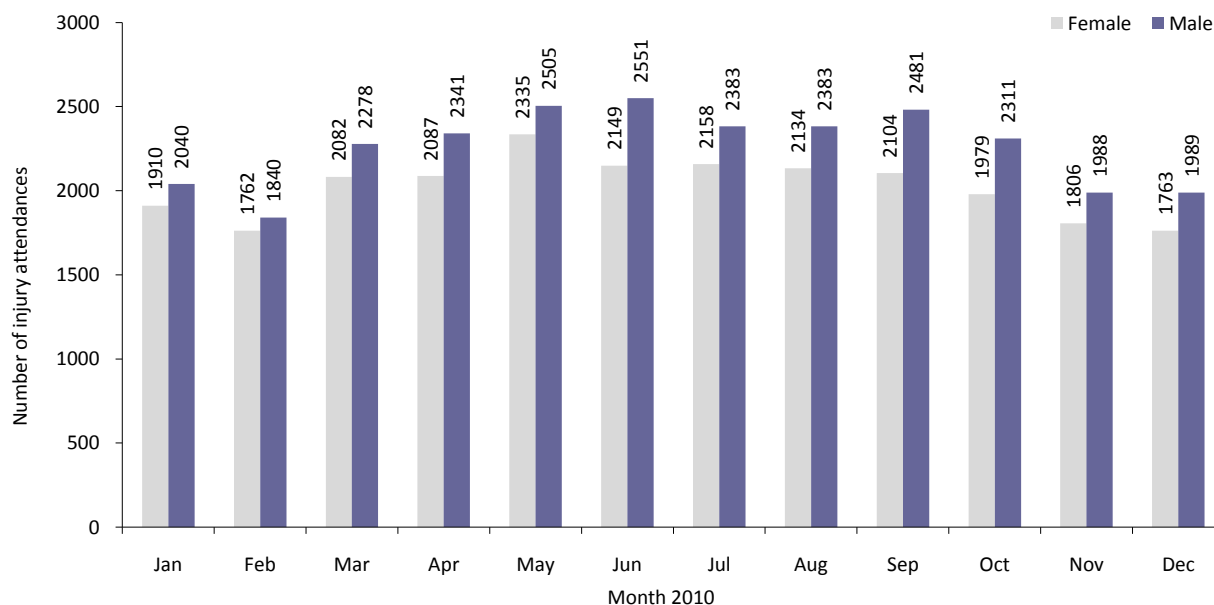


Figure 2: Age group of injury attendances by month, January to December 2010

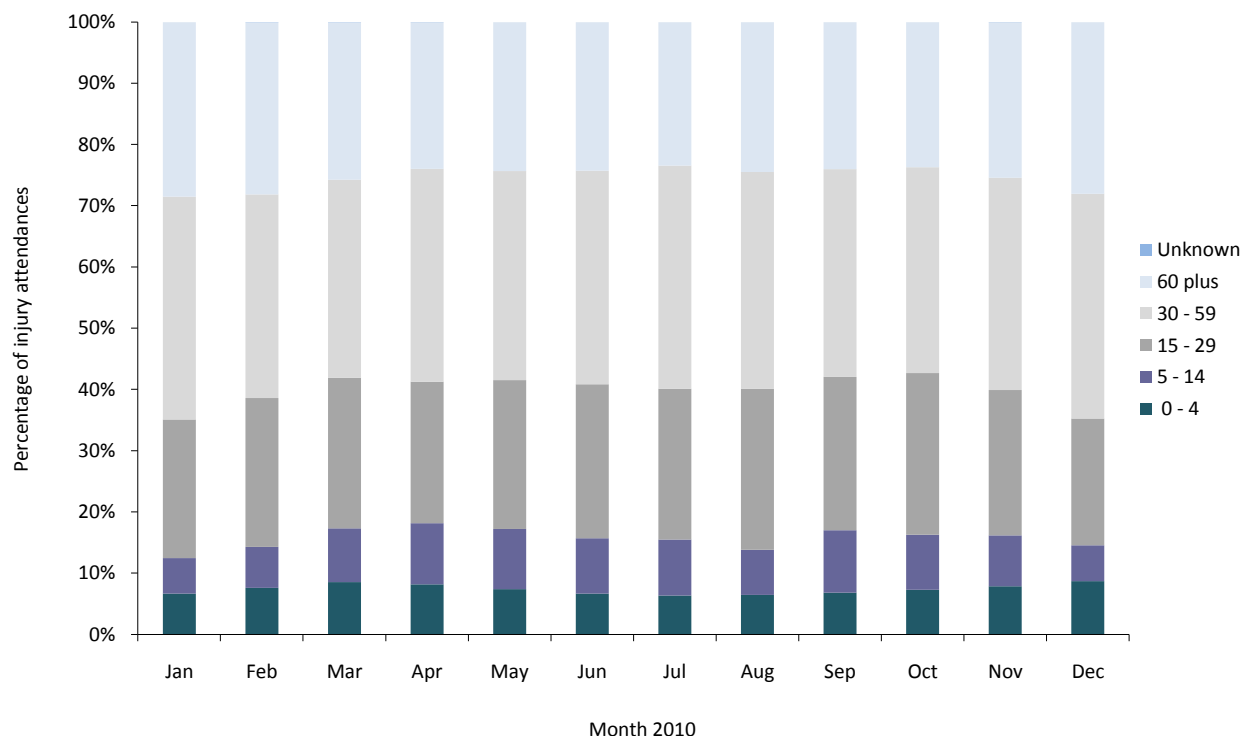


Table 1: Ethnicity of injury attendances, January to December 2010¹

Ethnicity	Jan	Feb	Mar	Apr	May	Jun	Jul	Aug	Sep	Oct	Nov	Dec	Total	%
White	3786	3459	4205	4265	4650	4532	4383	4340	4413	4138	3637	3601	49409	96
Black African	60	67	69	59	79	77	71	84	75	85	79	66	871	2
Other	33	24	23	23	25	27	31	24	39	19	22	33	323	1
Chinese	13	11	19	20	26	15	15	21	19	10	11	9	189	0
Unknown	16	17	10	24	11	9	13	12	10	12	***	***	144	0
Black Caribbean	17	***	9	13	18	13	9	9	8	***	12	14	129	0
Not stated	9	***	11	7	8	12	7	***	6	9	9	12	100	0
Other Asian background	***	9	***	***	5	***	5	9	***	***	5	***	55	0
Bangladeshi	7	***	7	***	8	5	5	6	***	***	***	***	53	0
Black other	***	***	***	***	***	***	***	***	***	6	8	***	31	0
Pakistani	***	***	***	***	***	***	***	***	***	***	***	***	21	0
Indian	***	***	***	5	***	***	***	***	***	***	***	***	20	0
Asian Bangladeshi	***	***	***	***	***	***	***	***	***	***	***	***	14	0
Total	3950	3602	4360	4428	4840	4700	4541	4517	4585	4290	3794	3752	51359	100

Table 2: Injury attendances by mode of arrival, January to December 2010

Mode of arrival	Jan	Feb	Mar	Apr	May	Jun	Jul	Aug	Sep	Oct	Nov	Dec	Total	%
Private transport	2280	2131	2637	2827	3058	2983	2897	2806	2881	2659	2386	2191	31736	62
Ambulance	1411	1242	1388	1332	1479	1397	1337	1363	1436	1374	1161	1312	16232	32
Public transport	139	133	199	155	160	174	144	159	123	129	136	148	1799	4
Walked in	68	56	86	70	76	90	111	121	92	76	70	59	975	2
Police	23	22	21	21	27	23	25	44	33	38	27	25	329	1
Other	21	***	19	16	16	20	20	16	***	***	***	11	195	0
Unknown	8	***	10	7	24	13	7	8	***	***	***	6	93	0
Total	3950	3602	4360	4428	4840	4700	4541	4517	4585	4290	3794	3752	51359	100

¹ *** Please note that all numbers less than five have been suppressed in line with patient confidentiality and if there is only one number less than five in a category then two numbers will be suppressed at the next level (e.g. <6) in order to prevent back calculations from totals.

Table 3: Source of referral for injury attendances, January to December 2010

Source of referral	Jan	Feb	Mar	Apr	May	Jun	Jul	Aug	Sep	Oct	Nov	Dec	Total	%
Self-referral	2524	2322	2799	2836	3369	3175	3190	3005	2773	2786	2483	2483	33745	66
Family member	435	425	540	581	568	535	454	537	523	486	518	427	6029	12
GP	556	425	521	512	360	478	429	499	710	464	301	305	5560	11
Emergency services	98	123	126	136	138	157	132	137	167	196	160	158	1728	3
Other referrer	129	101	132	117	126	123	103	111	134	136	123	123	1458	3
Walk-in-Centre	91	96	115	123	138	110	124	117	145	104	108	102	1373	3
Other hospital	42	33	41	38	44	39	41	37	41	49	24	36	465	1
Carer	34	27	36	32	46	33	28	24	32	23	30	28	373	1
Educational establishment	19	16	14	18	15	16	7	15	19	13	6	13	171	0
Employer	11	15	16	14	7	16	13	14	17	15	21	12	171	0
Police	9	12	9	12	15	13	13	13	14	14	12	10	146	0
Unknown	***	***	7	***	7	***	7	8	6	***	8	53	106	0
District nurse	***	***	***	***	***	***	***	***	***	***	***	***	24	0
Primary care	***	***	***	***	5	***	***	***	***	***	***	***	10	0
Total	3950	3602	4360	4428	4840	4700	4541	4517	4585	4290	3794	3752	51359	100

Table 4: Injury attendances by injury group, January to December 2010ⁱ

Injury group	Jan	Feb	Mar	Apr	May	Jun	Jul	Aug	Sep	Oct	Nov	Dec	Total	%
Other injury	2881	2602	3225	3266	3468	3424	3316	3279	3360	3042	2467	2487	36817	72
Fall	499	434	502	530	601	620	576	564	532	530	647	638	6673	13
RTC	274	303	342	323	404	331	339	376	378	415	454	379	4318	8
Assault	98	82	86	105	123	138	97	107	92	90	94	114	1226	2
Burns and scalds	70	58	76	71	113	87	92	85	71	94	46	28	891	2
Sports injury	77	73	76	87	74	55	58	69	88	59	41	47	804	2
Ingestion	24	28	21	26	33	29	40	16	33	36	30	31	347	1
Deliberate self-harm	27	22	32	20	24	16	23	21	31	24	15	28	283	1
Total	3950	3602	4360	4428	4840	4700	4541	4517	4585	4290	3794	3752	51359	100

Table 5: Discharge destination of injury attendances, January to December 2010

Discharge	Jan	Feb	Mar	Apr	May	Jun	Jul	Aug	Sep	Oct	Nov	Dec	Total	%
Discharged no follow-up	1676	1571	1933	2007	2191	2200	2157	1904	1989	2013	1857	1703	23201	45
Admissions	752	841	1521	1393	1521	1423	1357	1429	1454	1296	1111	1183	15281	30
Discharged to GP	242	203	286	329	370	319	328	430	445	372	262	259	3845	7
Did not wait	90	109	171	219	262	244	211	252	225	156	158	177	2274	4
Fracture clinic	190	168	166	183	193	207	190	213	229	172	147	196	2254	4
Emergency admissions unit	710	460	***	***	***	***	***	***	***	***	***	***	1170	2
Other	82	96	84	93	85	91	73	115	100	124	115	87	1145	2
ED review clinic	53	42	53	53	68	76	81	62	57	60	60	45	710	1
Sent to other hospital	26	25	31	22	32	37	37	36	35	32	24	35	372	1
Physiotherapy clinic	45	36	47	61	43	33	21	***	***	***	***	***	295	1
Outpatient clinic	24	15	23	34	27	23	23	23	23	22	19	30	286	1
Discharged with ear/nose/throat appointment at Whiston	26	15	22	19	21	16	33	32	11	20	20	20	255	0
Return for treatment	26	20	22	12	23	31	30	17	15	21	19	17	253	0
Sent to GP assessment unit	***	***	***	***	***	***	***	***	***	***	***	***	10	0
Discharged returning to GP clinic at Whiston ED	***	***	***	***	***	***	***	***	***	***	***	***	8	0
Total	3950	3602	4360	4428	4840	4700	4541	4517	4585	4290	3794	3752	51359	100

Published February 2011

Jennifer Brizell (TIIG Project Officer)

Centre for Public Health, Liverpool John Moores University, 2nd Floor, Henry Cotton Campus, 15-21 Webster Street, Liverpool, L3 2ET

Tel: 0151 231 4500 Email: j.s.brizell@ljmu.ac.uk

Website: www.tiig.info (please note that all data requests should be made through the TIIG website)ⁱ Due to low numbers and patient confidentiality firework injuries have been categorised under other injury (n=9).